

Safety is Your Responsibility



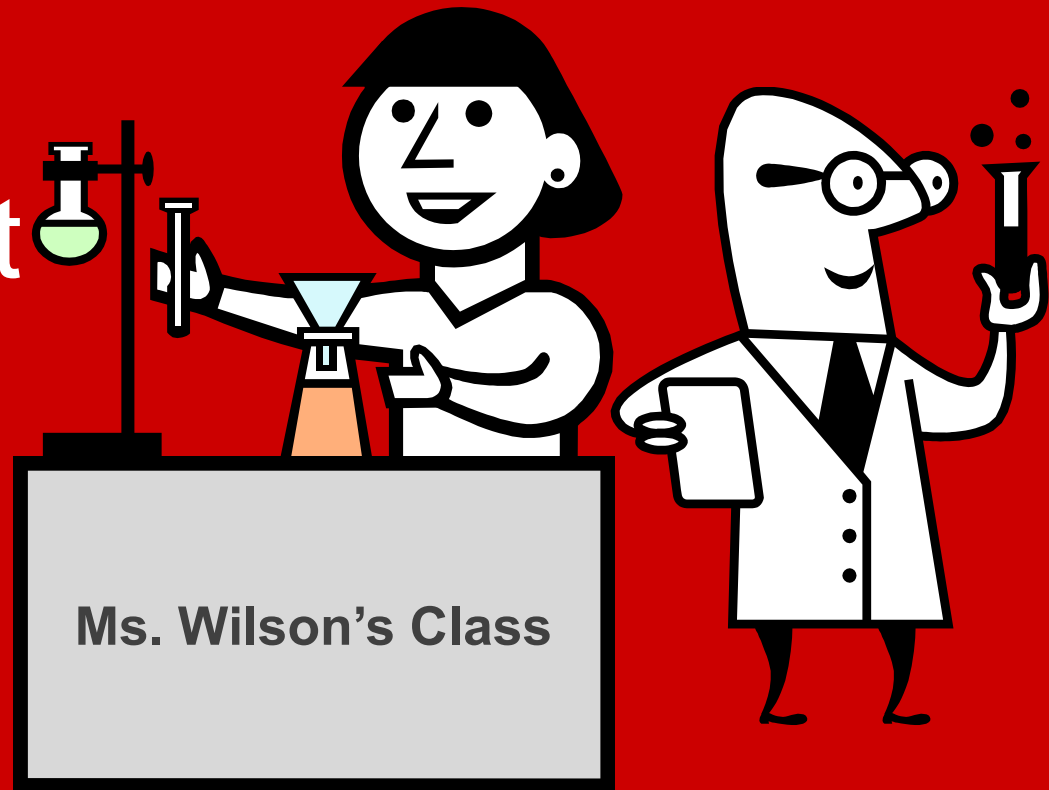
Lab Safety

- No eating or drinking in the lab.
- No chewing gum during labs.



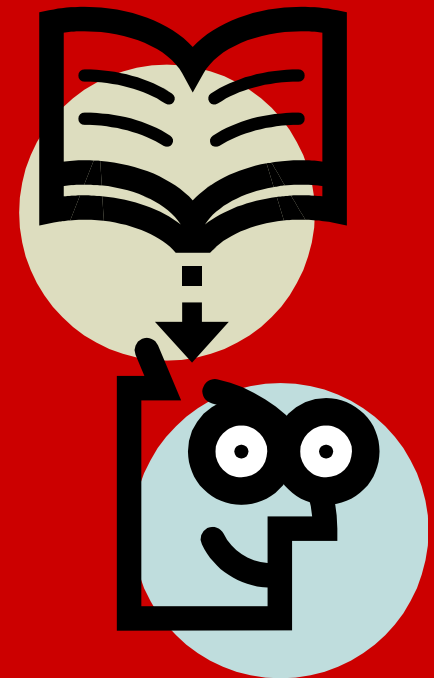
Lab Safety

- Never work in the laboratory without proper supervision by an instructor.
- Never carry out unauthorized experiments.



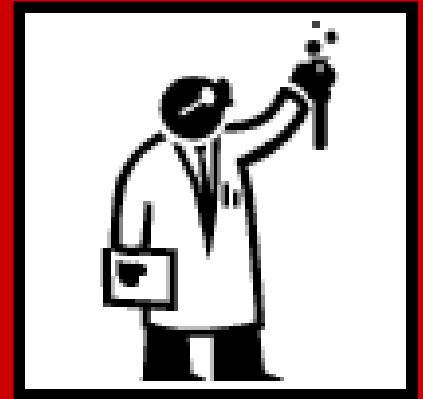
Lab Directions

- Knowledge is the best prevention.
Read the directions before beginning any lab procedure.
- Come to lab prepared.
- Follow directions.



Proper Lab Attire

- Eye protection (goggles) and lab apron must be worn in all labs.
- Points will be deducted from your lab grade if caught without wearing these items properly.



Eye Safety

- Do not wear contacts when working with strong chemicals. Chemical vapors can get trapped between your eyes and the contacts.



Clothing Safety

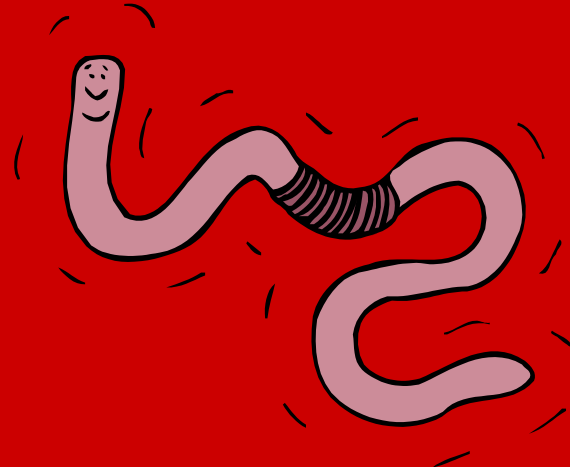
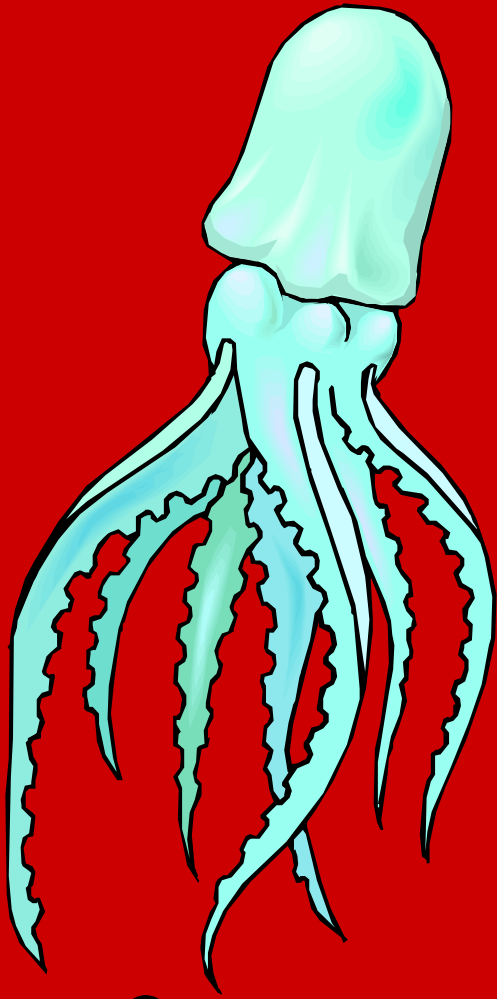
- Students should wear durable clothing that covers the arms, legs, torso and feet. **(Note: sandals or open-toed shoes should not be worn when working with chemicals, glassware or sharp objects).**



Biology Safety



- Wear gloves when working with preserved animals.
- Handle all living organisms with care and respect.





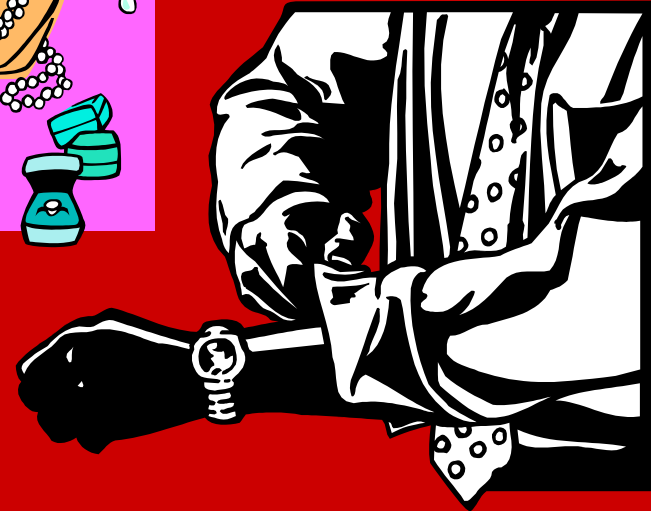
Fire Safety



- An open flame may be ignited only when **NO** flammable solvents are in the vicinity. Check to make sure the area is clear.
- Never reach across an open flame.
- Do **not** ever leave a flame unattended.
- Turn off gas valves when not in use.
- Keep paper away from open flames.

Fire Safety

- Clothing or hair are the most dangerous types of lab fire.
- Secure loose sleeves.
- Tie hair back away from face.
- Remove dangling jewelry.



Fire Safety

- If your partner is involved in a fire, get the fire blanket. The teacher will aid you in smothering the fire.
- Remember to STOP, DROP and ROLL.
- Fire extinguisher is located in the emergency cabinet by the main door to the classroom.



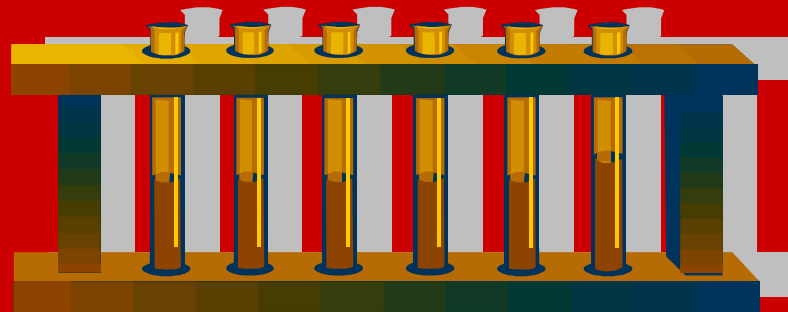
Heating Safety

- Always remember, **HOT** glassware looks exactly the same as **COLD** glassware. Be careful what you touch.



Chemical Safety

- Never taste any chemical in the lab.
- Label all bottles and test tubes containing chemicals.



Chemical Safety

- Never add water to acids
- Always Add Acid to water
- Memory Hint:
Think of Triple “A”
(AAA)



Chemical Safety

- If chemicals splash into someone's eyes, act quickly and get them to the eye wash station. Flush eyes for 20 min.
- Use emergency shower if strong chemicals spill on skin and clothes.



- Located in front of room

Chemical Spills

- Treat all spills as hazardous.
- Notify your teacher of any chemical spills.
- Use proper procedures to clean all spills.



Chemical Care

- Handle ALL chemicals with care.
- DO NOT mix chemicals unless you are authorized to do so.
- ALWAYS label your chemicals.
- Work with chemicals under a chemical fume hood. (Located in back of room)



Gas Precaution

- Point test tubes away from you when heating.
- Do not inhale fumes directly! Waft the fume vapors towards you.



Electrical Safety

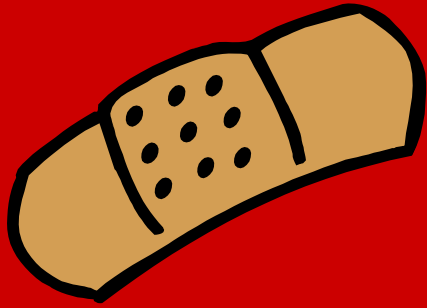
- Never handle electrical equipment with wet hands.
- Keep all cords out of water.



Broken Glass

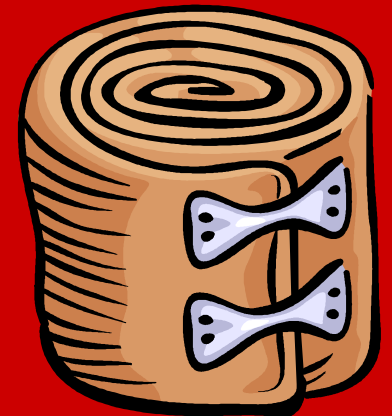
- This is the most common lab accident.
- If you break glassware, stop and notify the teacher.
- Do NOT throw broken glass into the trash can. Place it in the broken glass container.





Cuts and Scrapes

- Report immediately!
- There is always a chance of infection.
- Do NOT come into contact with another person's blood.



Emergency Procedures

- In case of a dangerous accident (cut, burn, fire, and etc.), notify the teacher and class immediately.



Know the Location and Operation of:

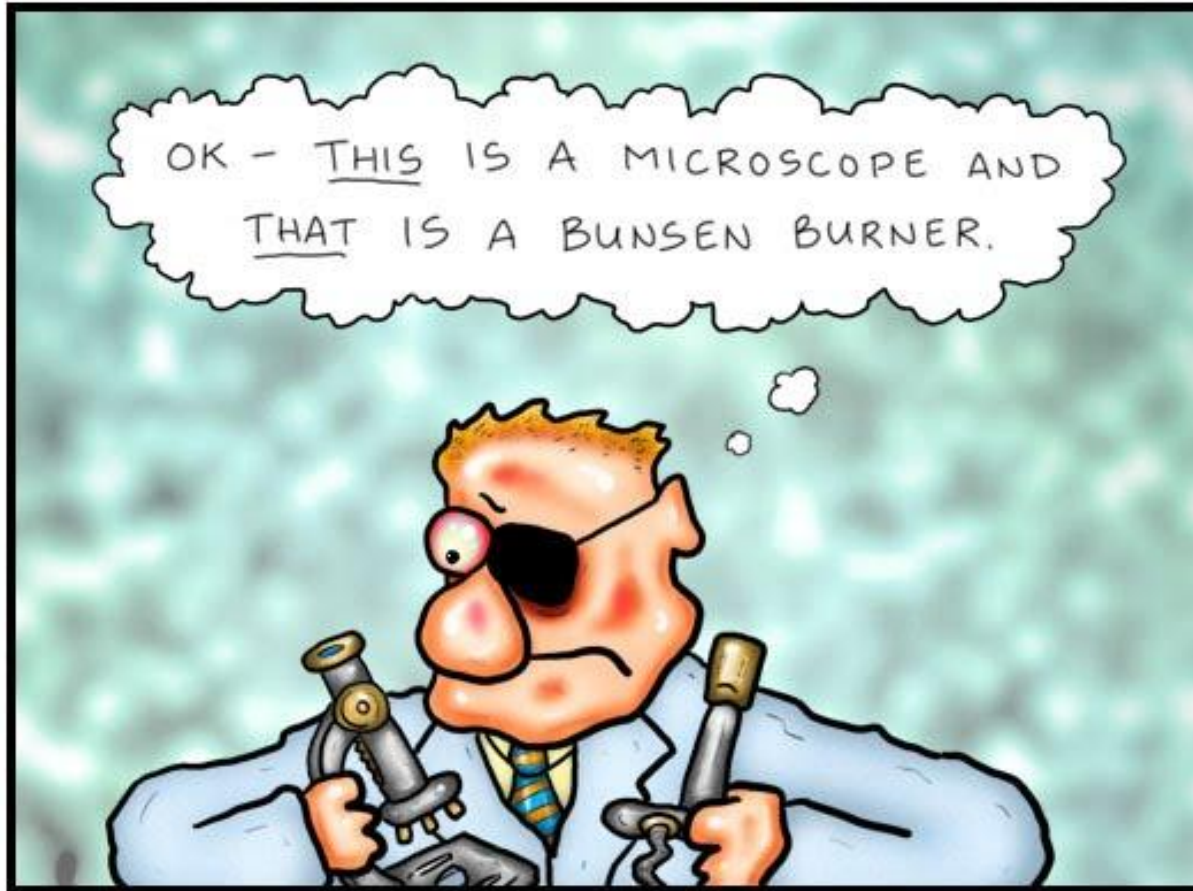
- Fire extinguishers
- Fire blanket
- Fire Alarm
- Exit doors
- “Panic Button”
- Defibrillator
- First Aid Kit
- Emergency Eyewash and Shower
- Emergency Gas Shutoff Valve



Safety starts and ends with you!

DOCTOR FUN

26 May 2005



Copyright © 2005 David Farley, d-farley@ibiblio.org
<http://ibiblio.org/Dave/drfun.html>

This cartoon is made available on the Internet for personal viewing only. Opinions expressed herein are solely those of the author.

Science lab 101